



**KRAKOW  
TECHNOLOGY  
PARK**



**Polska  
Strefa Inwestycji**

JUNE 2022

# MALOPOLSKA REGION BUSINESS POTENTIAL

Over 449,000 enterprises



75 950 companies



313 035 natural persons  
running own businesses (sole  
proprietors)



6 908 PLN (ca. 1480 EUR)  
average gross salary  
in corporate sector

Share in the GDP  
of Poland

8,1%

Unemployment rate

Małopolska

4,4%

Kraków

2,7%



- MOST **INNOVATIVE REGION** IN POLAND
- ENGINEERING, MANAGERIAL STAFF AND THE **BEST SPECIALISTS**
- **HIGH-QUALITY** HIGHER EDUCATION – 40 000 UNIVERSITY GRADUATES,  
IN SCIENCE, TECHNOLOGY, ENGINEERING OR MATH (STEM) MAJORS IN 2019
- FAVOURABLE **BUSINESS INFRASTRUCTURE**
- 1.5 MILLION SQM OF OFFICE SPACE, A WIDE WAREHOUSE OFFER,
- TRANSPORT ACCESSIBILITY:
- LARGEST REGIONAL AIRPORT IN POLAND: **KRAKÓW AIRPORT**
- NUMEROUS BUSINESS **SUPPORT ORGANISATIONS**
- **14 MILION TOURISTS** VISITING KRAKOW EVERY YEAR  
(THE TOP TOURIST DESTINATIONS BY CNN OR THE TELEGRAPH)





# CONNECTIONS

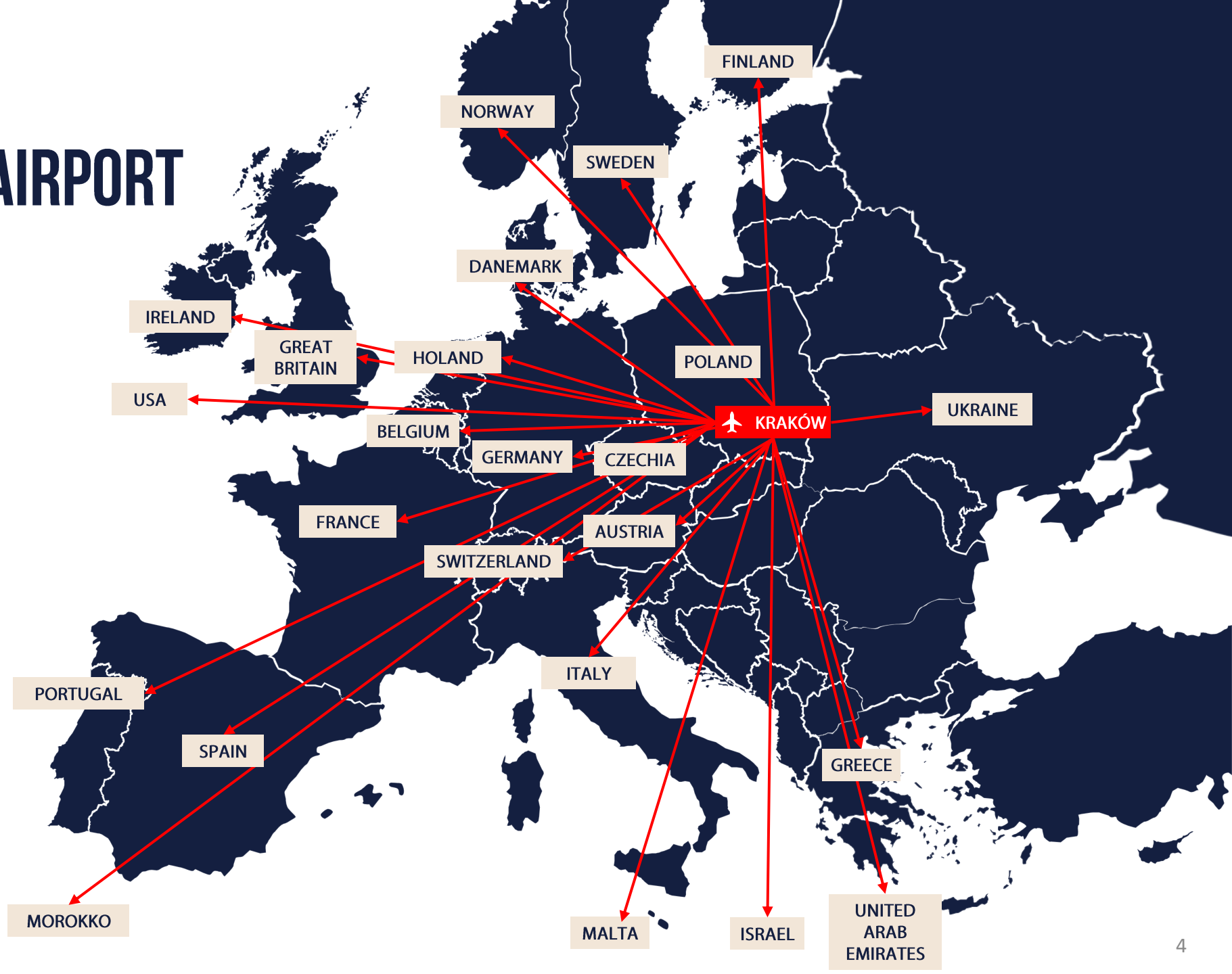
## KRAKOW—BALICE AIRPORT

 145 connections

 22 airlines

 8,4 mln passengers  
a year (2019)

 max 3h 45' to reach  
most European cities



# TRANSPORT: ROAD GRID



Germany 458 km/ 285 mi

Czechia 124 km/ 77 mi

Slovakia 94 km/ 58 mi

Ukraine 258 km/ 160 mi

3 international  
motorways  
(E40, E77, E462)

# EDUCATION

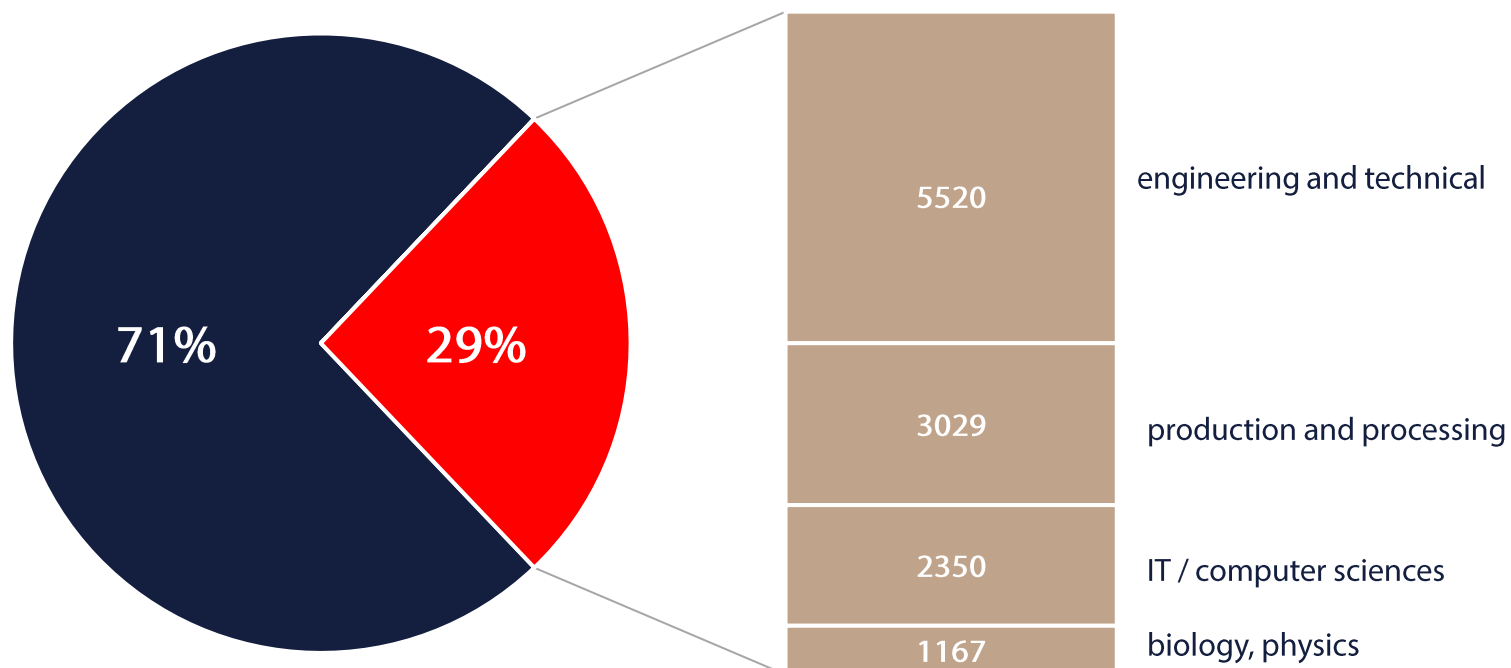


**Ranked No. 2** in Poland  
in the academic year 2016/17



**Over 146k** students  
incl. around **8k** from overseas

ca. 40k graduates / year



# EDUCATION

## UNIVERSITIES AND COLLEGES

# 30



## (23 IN KRAKOW)

Jagiellonian University

AGH University of Science  
and Technology

Krakow University  
of Technology

Krakow University  
of Economics

University of Agriculture  
in Krakow

+ some state and many  
private ones

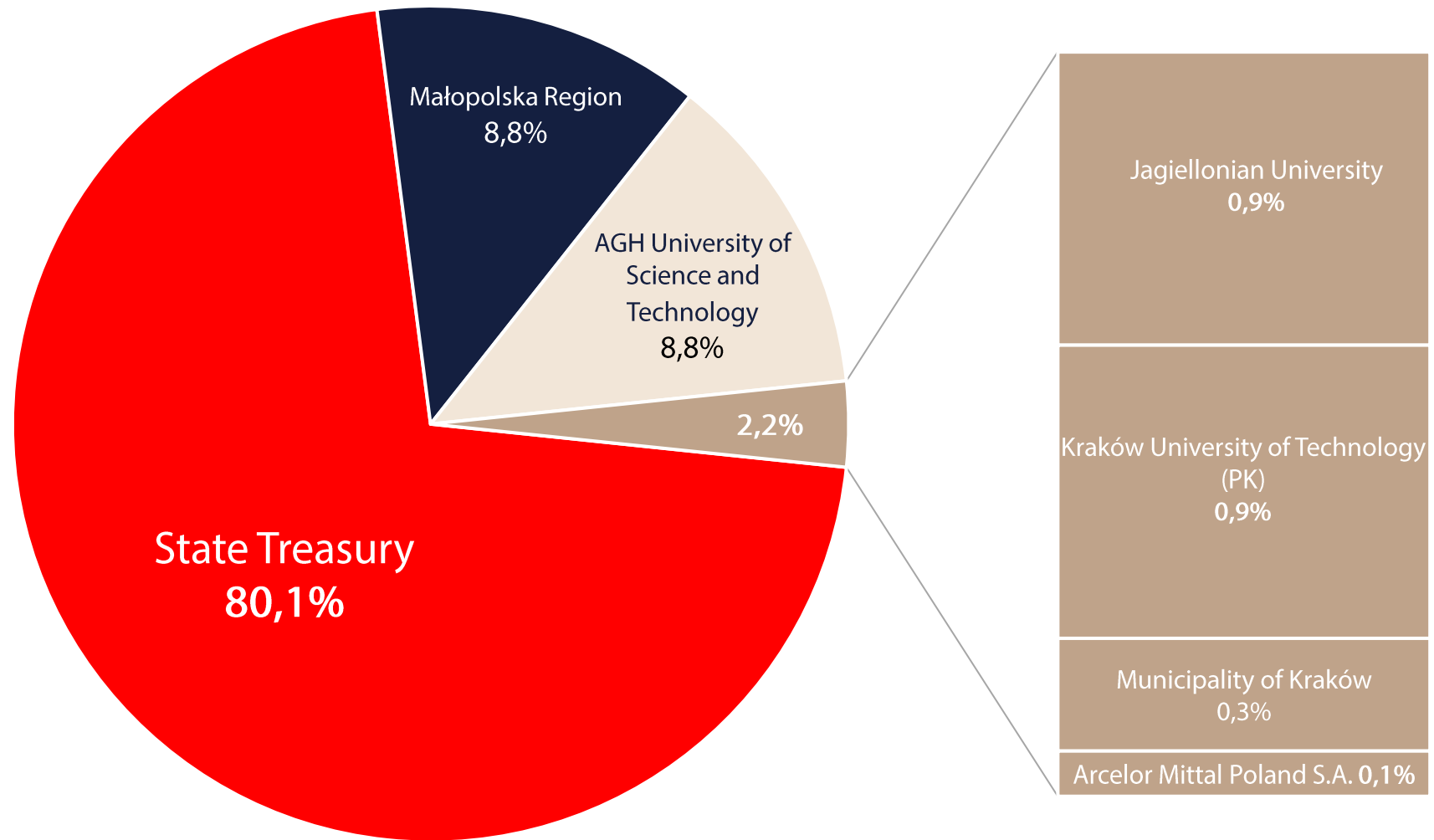
# **KRAKOW TECHNOLOGY PARK AND OUR ROLE IN THE WHOLE STORY**





**WE HELP COMPANIES  
GROW FASTER**

# KTP SHAREHOLDERS



# KTP OFFICE



## 60 PODOLE STREET, RUCZAJ

Technology incubator; Offices; Coworking; Conference rooms



## 14 ŻYCZKOWSKIEGO STREET, CZYŻYNY

Offices; Conference rooms



# BUSINESSES IN THE KTP



**268**  
investors  
in the special  
economic zone

**56**  
graduates  
of acceleration

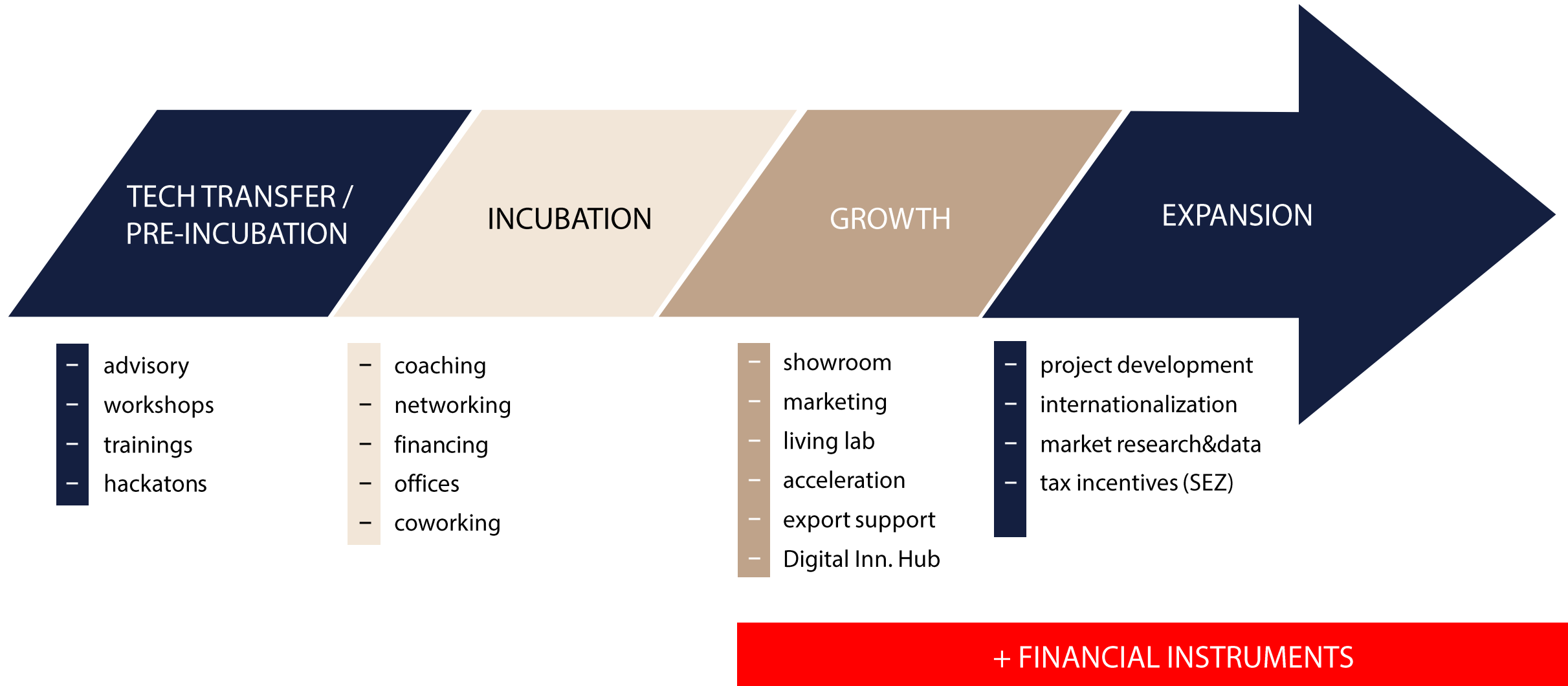


**80**  
tenants  
in the park  
incl. incubated  
businesses

**40**  
seed  
investments



# KTP SUPPORT TOOLS



# SPECIAL ECONOMIC ZONE POLISH INVESTMENT ZONE

**25**

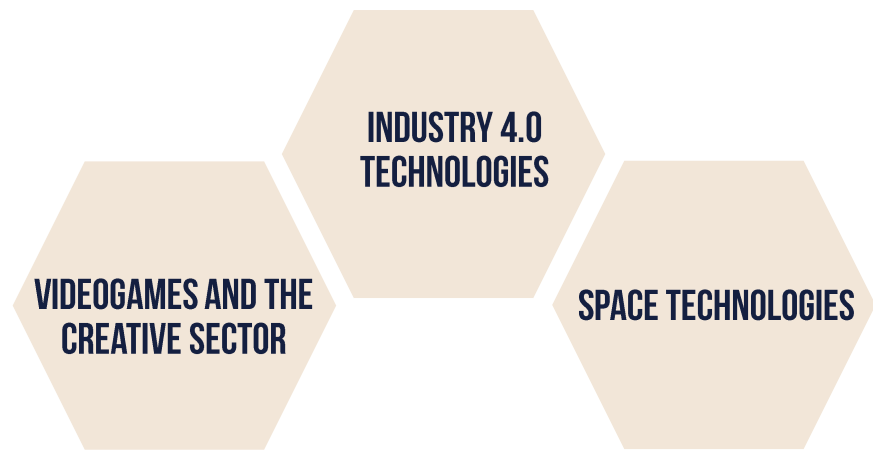
**YEARS  
OF OPERATION**

**354**  
permits  
to operate  
in the zone

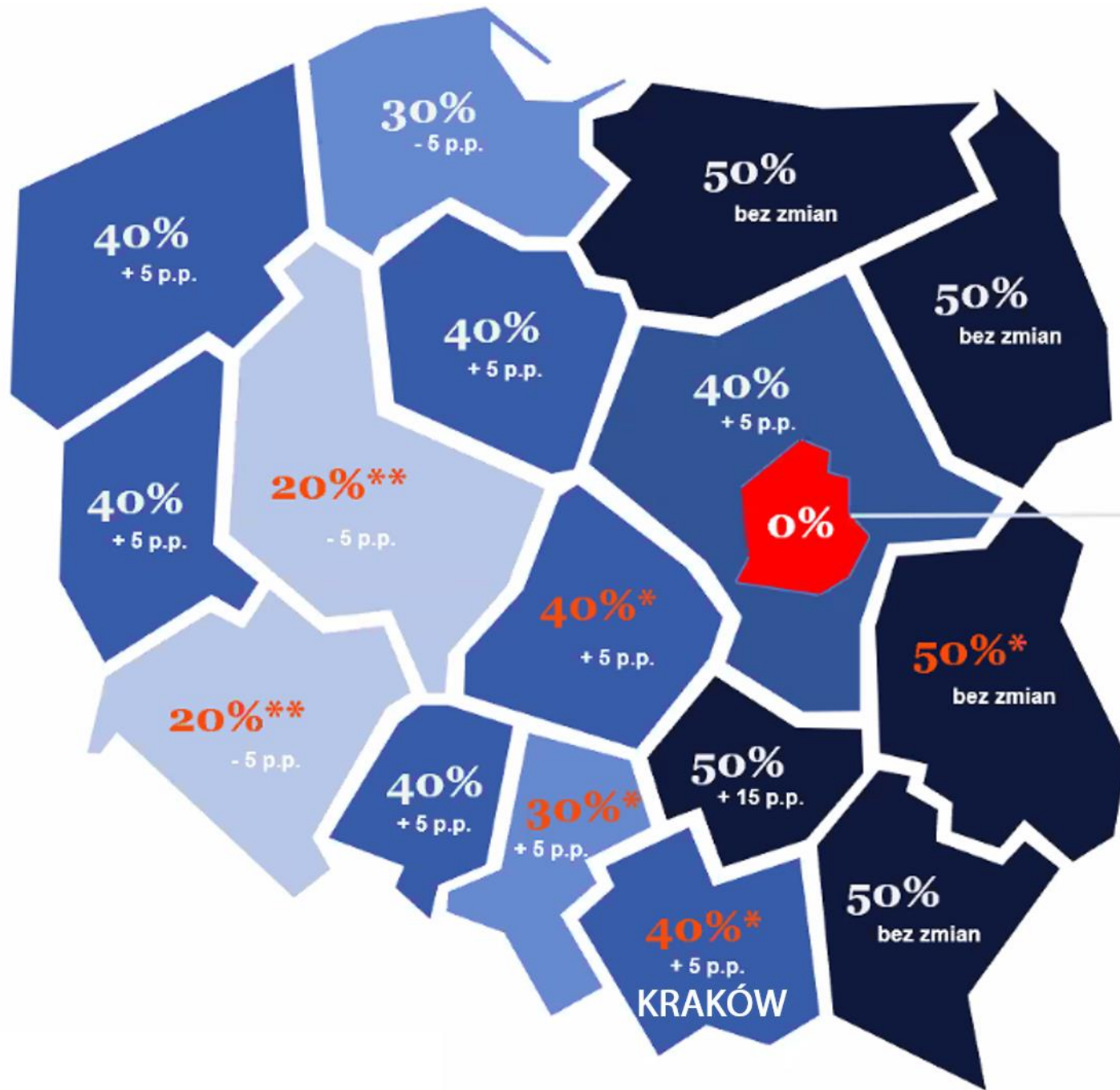
**12,4 billion**  
investment  
outlay  
(PLN)

**14 500+**  
jobs

# LEADING SECTORS

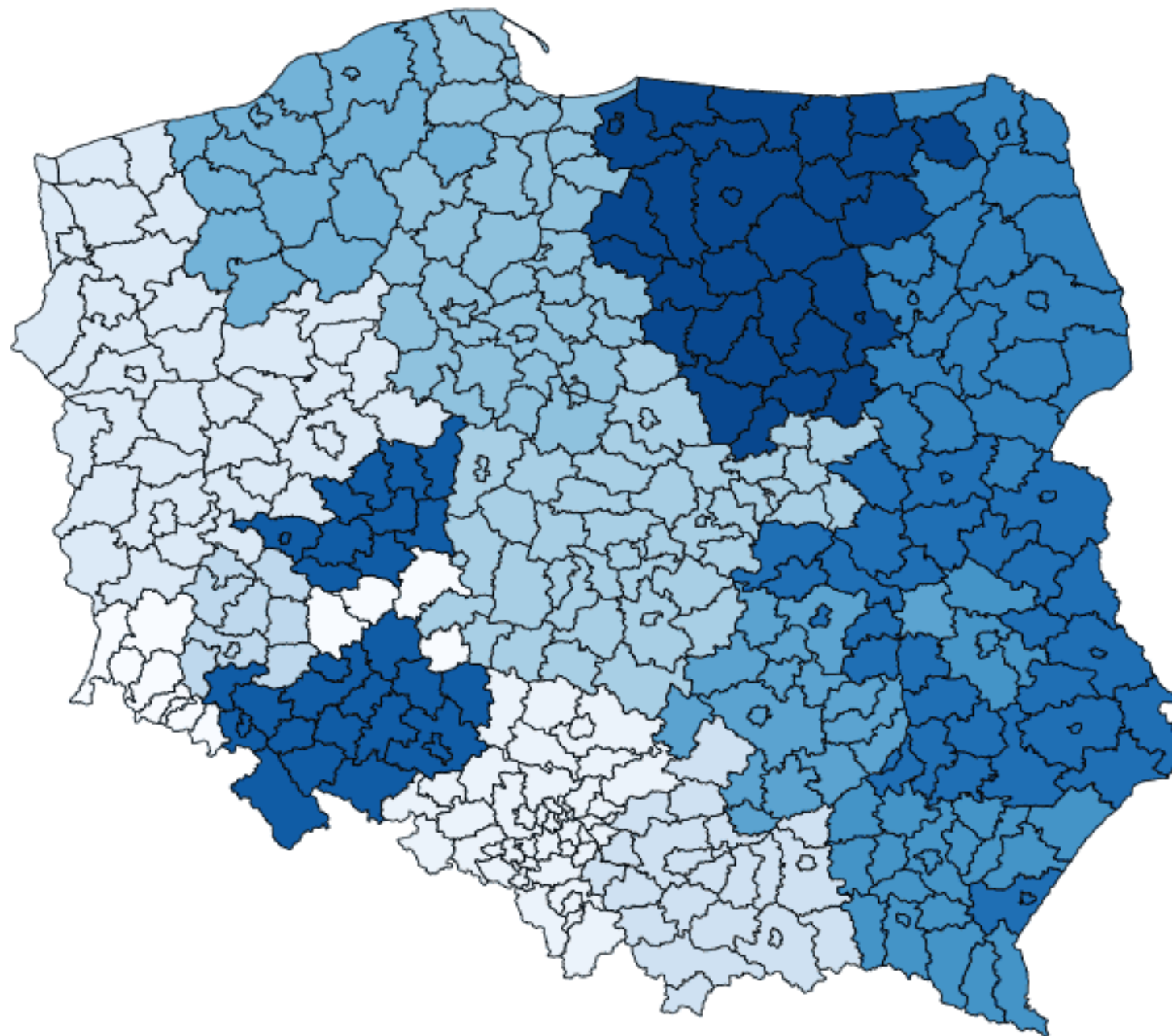


**DEVELOPMENT LINES**



WARSZAWA





## Special Economic Zones

- Kamiennogórska SSE Małej Przedsiębiorczości
- Katowicka SSE
- Kostrzyńsko-Słubicka SSE
- Krakowski Park Technologiczny
- Legnicka SSE
- Łódzka SSE
- Pomorska SSE
- Słupska SSE
- SSE "Starachowice"
- SSE Euro-Park Mielec
- Suwalska SSE
- Tarnobrzaska SSE EURO-PARK WISŁOSAN
- Wałbrzyska SSE INVEST-PARK
- Warmińsko-Mazurska SSE

# CASE STUDY

Company: **NFQ Technologies**

Country of origin: **Lithuania**

Sector: IT, digital innovations

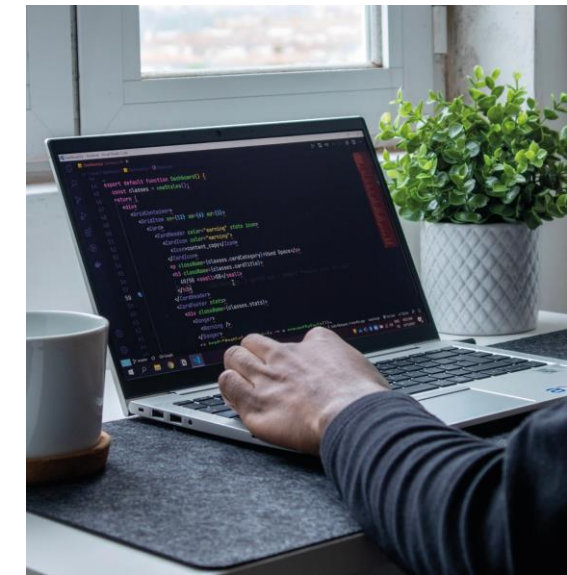
Declared employment: **57**

- 48: Lead Software Engineer, Senior Software Engineer, Software Engineer, Junior Software Engineer, SysOps;
- 9: Project Manager, Administrator, Recruiter, Branch Manager.

Overall investment outlay: **30 000 000 PLN**

Why they choose Malopolska Region?

- high level experts in IT (programmers); technical universities; offices availability; clients form Poland.



# CASE STUDY

Company: **Monterosa Productions Limited**

Country of origin: **Great Britain**

Sector: **software development, R&D - Monterosa Interaction Cloud**

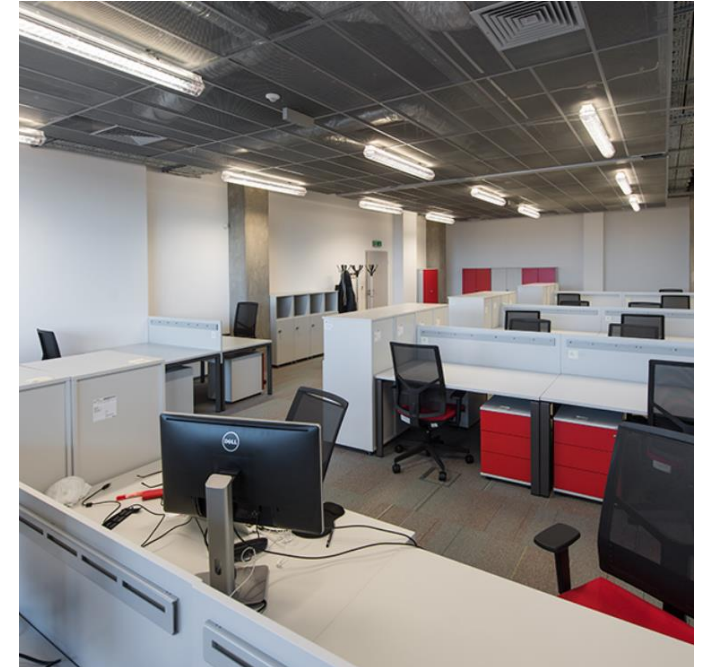
Declared employment: **9** (Digital Producer / Project Manager, Tech Leads, Software developers, QA Engineers - all from Belarus)

Overall investment outlay: **5 000 000 PLN** (two-year employment costs)

Why they choose Malopolska Region?

- high level experts in IT (programmers); technical universities;
- Office space offered by Krakow Technology Park (Business Incubator);

**Monterosa** 



# CASE STUDY

Company: **FUHR International GMBH**

Country of origin: **Germany**

Sector: manufacturer - **multipoint door lock systems**

Declared employment: 40 (manufacturing workers)

Overall investment outlay: **14 600 000 PLN** (plot, production hall and equipment)

Why they choose Malopolska Region?

- Tax relase – Polish Investment Zone;
- Plot in Economic Activity Zone in Babice
- Expand their market to CEE countries

The logo for FUHR, consisting of the word "FUHR" in white, bold, sans-serif capital letters inside a dark blue rounded rectangle. A registered trademark symbol (®) is located at the top right of the rectangle. Below the logo is a thick, solid dark blue horizontal bar.



# POLISH INVESTMENT ZONE IN MAŁOPOLSKA REGION 2021

**68** SUPPORT DECISIONS

**1127** JOBS

**0,6 BN EU** INVESTMENT  
OUTLAY

**53**

SMEs



**15**

LARGE

**43**

REINVESTMENTS



**25**

NEW INVESTMENTS



**55**

POLISH INVESTORS



**13**

FDI



# WHO INVESTED IN MALOPOLSKA?

|   |   |  |   |   |   |   |
|---|---|--|---|---|---|---|
|    |    |    |    |    |    |    |
|    |    |    |    |    |    |    |
|    |    |   |   |   |    |    |
|  |  |  |  |  |  |  |



**KRAKOW  
TECHNOLOGY  
PARK**



+48 690 835 700



lblacha@kpt.krakow.pl



ul. Podole 60  
30-394 Kraków

**WWW.KPT.KRAKOW.PL**